

MATERIAL REFERENCE OVERVIEW

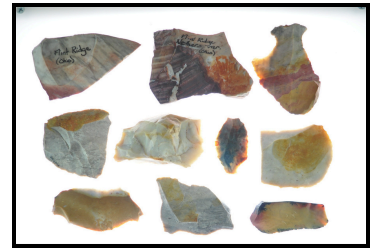
Each of these chert types represent materials commonly used for projectile points found across archaeological sites throughout Ontario. While the majority can be found in geological formations within the province, many artifacts found in Ontario are made of “exotic” materials, sourced south of the Canada-US border. As a result, some of those chert types have been included in this material overview. This is not an exhaustive list of cherts used throughout Ontario and instead provides users of this guide with a very basic introduction to the most common projectile point materials in Southern Ontario.



Ancaster



Bayport



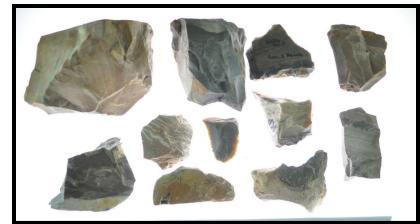
Flint Ridge



Fossil Hill



Haldimand



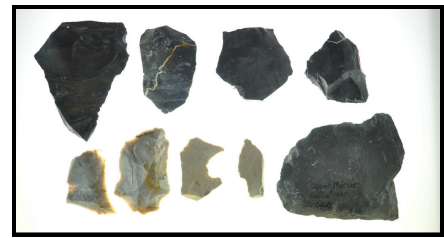
Kettle Point



Onondaga



Selkirk



Upper Mercer

ANCASTER CHERT →



Physical Description

Medium grey colouring, often found with darker inclusions and characteristic “rusty” iron oxide staining. Luster is dull and vitreous and is dense and often brittle.

Period and Formation

Middle Silurian, Goat Island Member of the Lockport formation.

Rough Location

Found nodules and lenses along limestone bedding of the Niagara escarpment, ending east of the Niagara River.

References - Eley, B. E., & Von Bitter, P. H. (1989). Cherts of southern Ontario. Royal Ontario Museum.; Fox, W. A. (2009). Ontario Cherts Revisited. In *Painting the past with a broad brush: papers in honour of James Valliere Wright* (pp. 353–369). essay, Canadian Museum of Civilization.

BAYPORT CHERT →



Physical Description

Light grey colour with concentric banding, porous and coarse grained with a dull luster.

Period and Formation

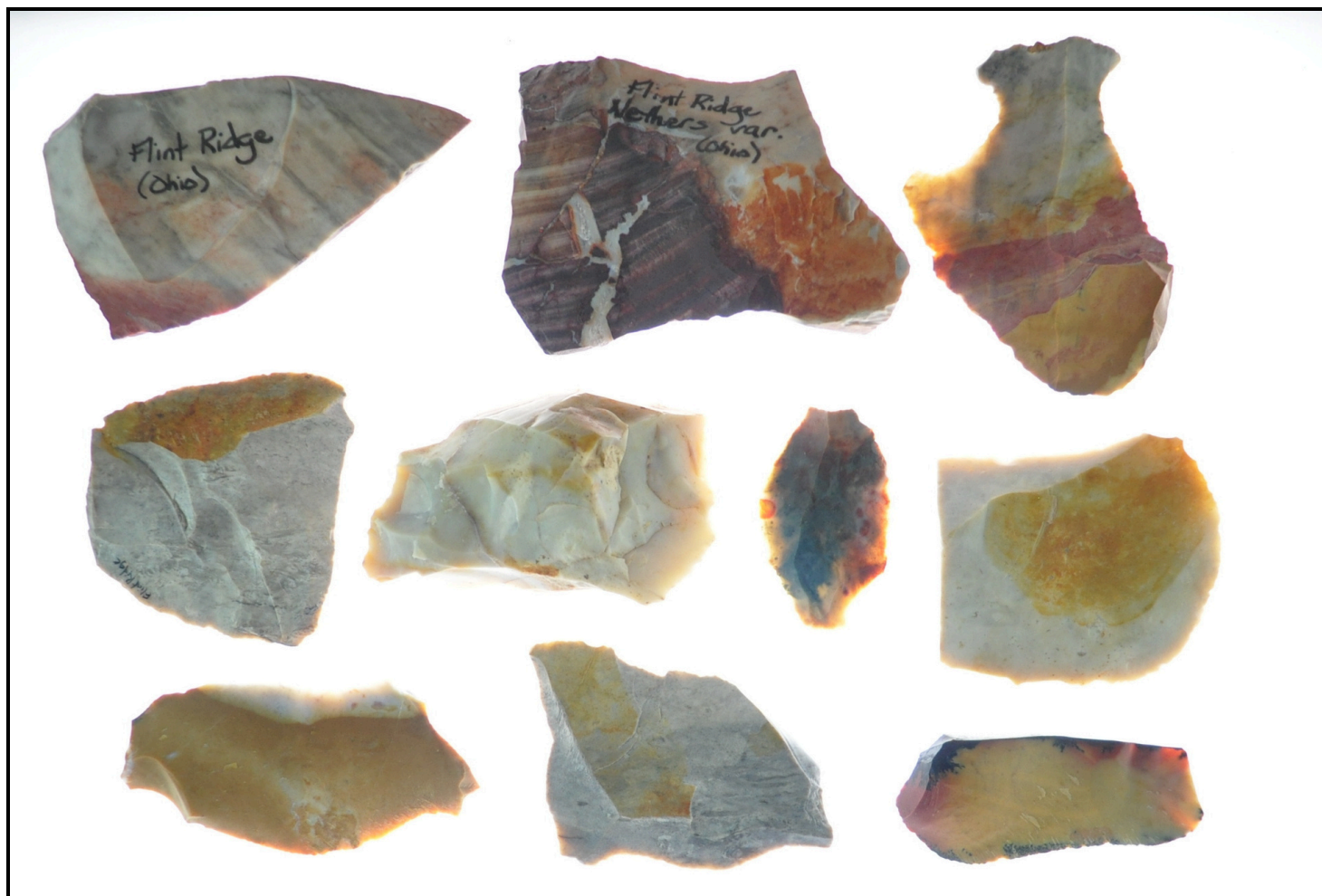
Carboniferous Upper Mississippian, Bayport formation.

Rough Location

Found in Dolomite and limestone in eastern Michigan.

References - Luedtke, B. E. (1992). An archaeologist's guide to chert and flint. Institute of Archaeology, University of California.

FLINT RIDGE CHERT/CHALCEDONY



Physical Description

Highly Variable colour ranging from white to dark grey with pink, red, yellow and blue inclusions, often found mottled or streaked. Texture is fine with a shiny to medium luster, can often be translucent.

Period and Formation

Carboniferous Middle Pennsylvanian, Vanport Formation.

Rough Location

Found in Limestone and shale in central Ohio.

References - Luedtke, B. E. (1992). An archaeologist's guide to chert and flint. Institute of Archaeology, University of California.

FOSSIL HILL CHERT

AKA Collingwood Chert →



Physical Description

Variable colour ranging from white to bluish white and grey with black iron or manganese specks and clear quartz crystal speckling sometimes referred to as “salt and pepper,” often stained with shades of green, yellow or red. Luster can be dull to vitreous and is quite dense, sometimes with pitting.

Period and Formation

Middle Silurian, Fossil Hill formation.

Rough Location

Bruce and Grey Counties along Niagara escarpment, Collingwood variant localized to the Blue Mountains area.

References - Eley, B. E., & Von Bitter, P. H. (1989). Cherts of southern Ontario. Royal Ontario Museum.; Fox, W. A. (2009). Ontario Cherts Revisited. In *Painting the past with a broad brush: papers in honour of James Valliere Wright* (pp. 353–369). essay, Canadian Museum of Civilization.

HALDIMAND CHERT

AKA Bois Blanc Chert →



Physical Description

Variable colour from light to dark grey, grey blue or brown, with a porcelaneous or dull luster and a fine, dense texture.

Period and Formation

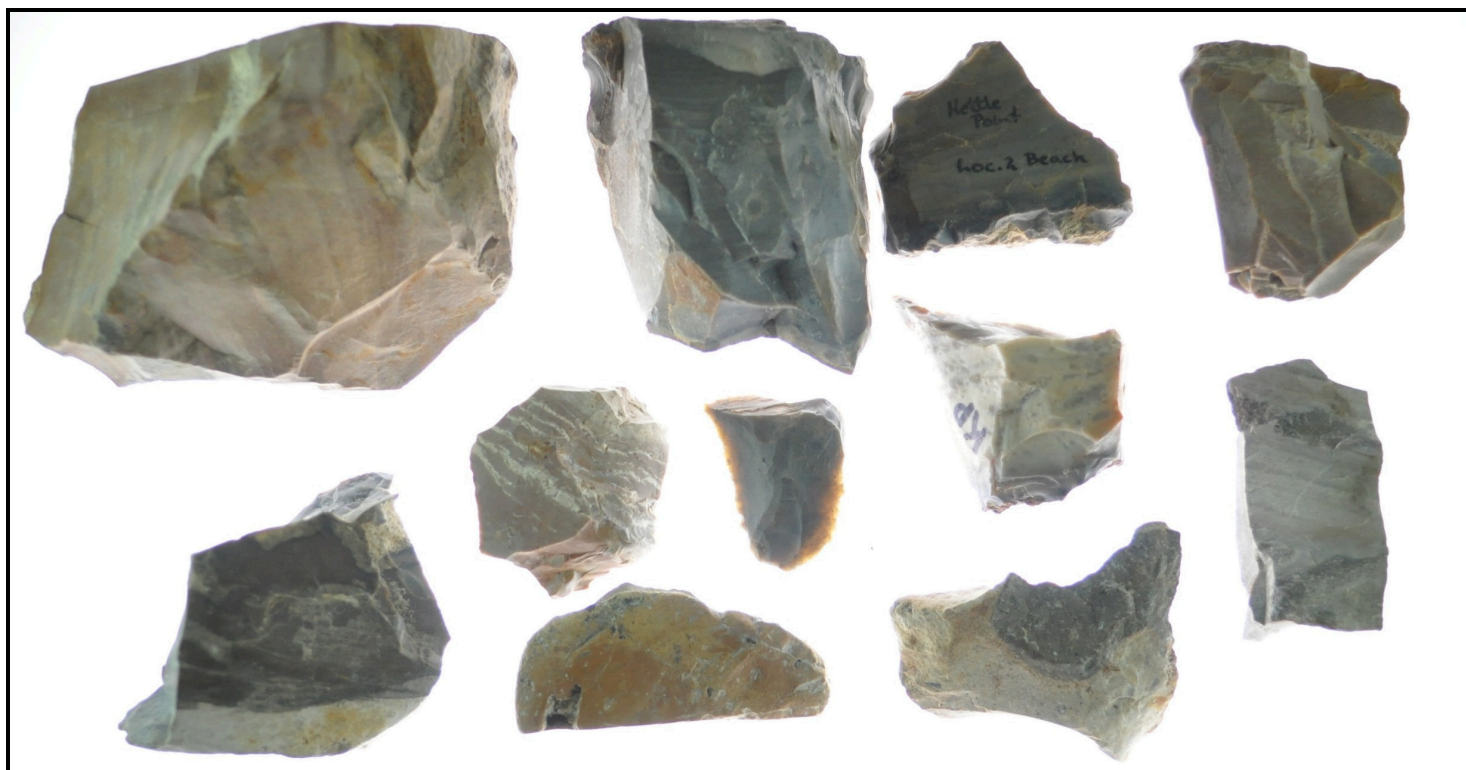
Early Devonian, Bois Blanc formation.

Rough Location

Found in limestone, shale and dolomitic limestone in Upper Michigan and Southern Ontario.

References - Eley, B. E., & Von Bitter, P. H. (1989). Cherts of southern Ontario. Royal Ontario Museum.; Luedtke, B. E. (1992). An archaeologist's guide to chert and flint. Institute of Archaeology, University of California.

KETTLE POINT CHERT →



Physical Description

Variable, sometimes mottled colour ranging from brown, bluish, grey and black. Waxy luster and develops a yellow-brown or rusty patina. Dense and non-porous.

Period and Formation

Upper Devonian, Ipperwash formation.

Rough Location

Found in grey shale and limestone around kettle point, Lake Huron, Ontario.

References - Eley, B. E., & Von Bitter, P. H. (1989). Cherts of southern Ontario. Royal Ontario Museum.; Fox, W. A. (2009). Ontario Cherts Revisited. In *Painting the past with a broad brush: papers in honour of James Valliere Wright* (pp. 353–369). essay, Canadian Museum of Civilization.; Luedtke, B. E. (1992). *An archaeologist's guide to chert and flint*. Institute of Archaeology, University of California.

ONONDAGA CHERT



Physical Description

Variable colour, light to dark or bluish grey, brown or black, often mottled. Luster is dull to vitreous or waxy and is nonporous and dense.

Period and Formation

Upper Devonian, Onondaga formation.

Rough Location

Can be found in limestone outcrops through New York into southern Ontario along boundary between Silurian and Ordovician formations.

References - Eley, B. E., & Von Bitter, P. H. (1989). Cherts of southern Ontario. Royal Ontario Museum.; Luedtke, B. E. (1992). An archaeologist's guide to chert and flint. Institute of Archaeology, University of California.

SELKIRK CHERT



Physical Description

Colour varies greatly from white, to medium grey to grey-brown all with mixed degrees of mottling. Can be found without luster, dull-vitreous and waxy.

Period and Formation

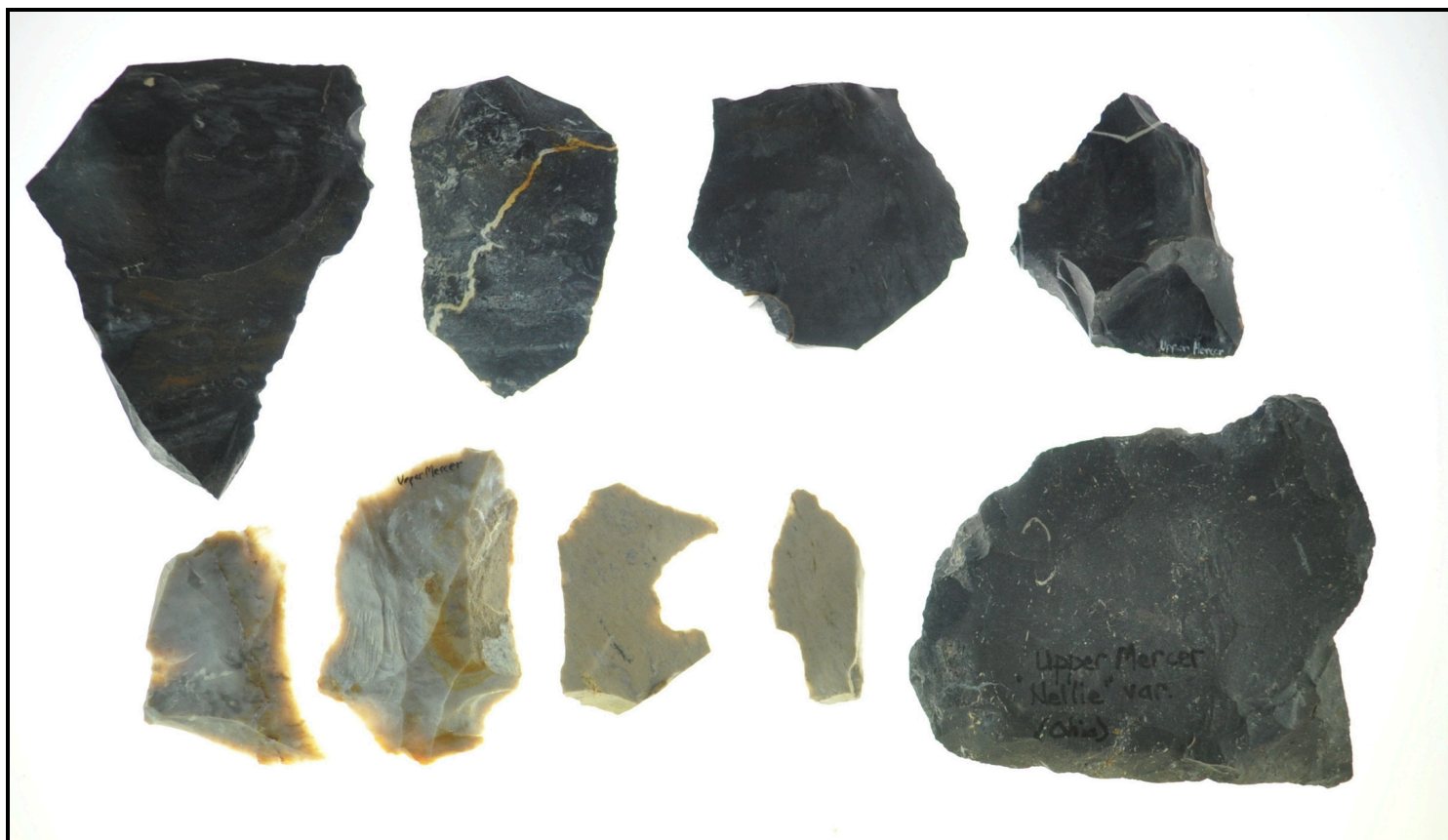
Middle Devonian, Dundee formation.

Rough Location

Found in nodules and lenses in limestone around Port Dover, Nanticoke, Vola Beach, and north of Cheapside, Ontario.

References - Eley, B. E., & Von Bitter, P. H. (1989). Cherts of southern Ontario. Royal Ontario Museum.; Fox, W. A. (2009). Ontario Cherts Revisited. In *Painting the past with a broad brush: papers in honour of James Valliere Wright* (pp. 353–369). essay, Canadian Museum of Civilization

UPPER MERCER CHERT



Physical Description

Black or dark grey typically, can be mottled and often hosts veins of white or blue chalcedony. Has a fine medium to shiny luster and a medium to fine texture.

Period and Formation

Carboniferous Lower Pennsylvanian, Upper Mercer Formation.

Rough Location

Found in limestone and shale in central Ohio.

References - Luedtke, B. E. (1992). An archaeologist's guide to chert and flint. Institute of Archaeology, University of California.